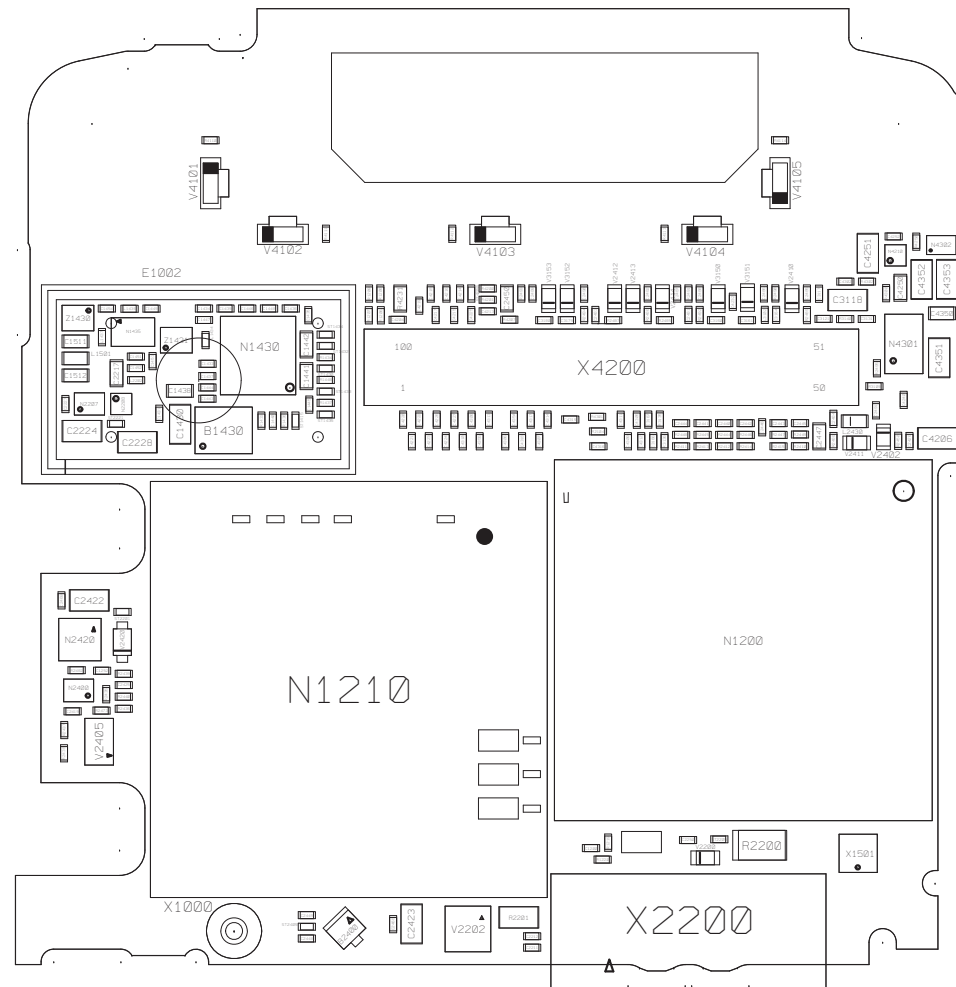


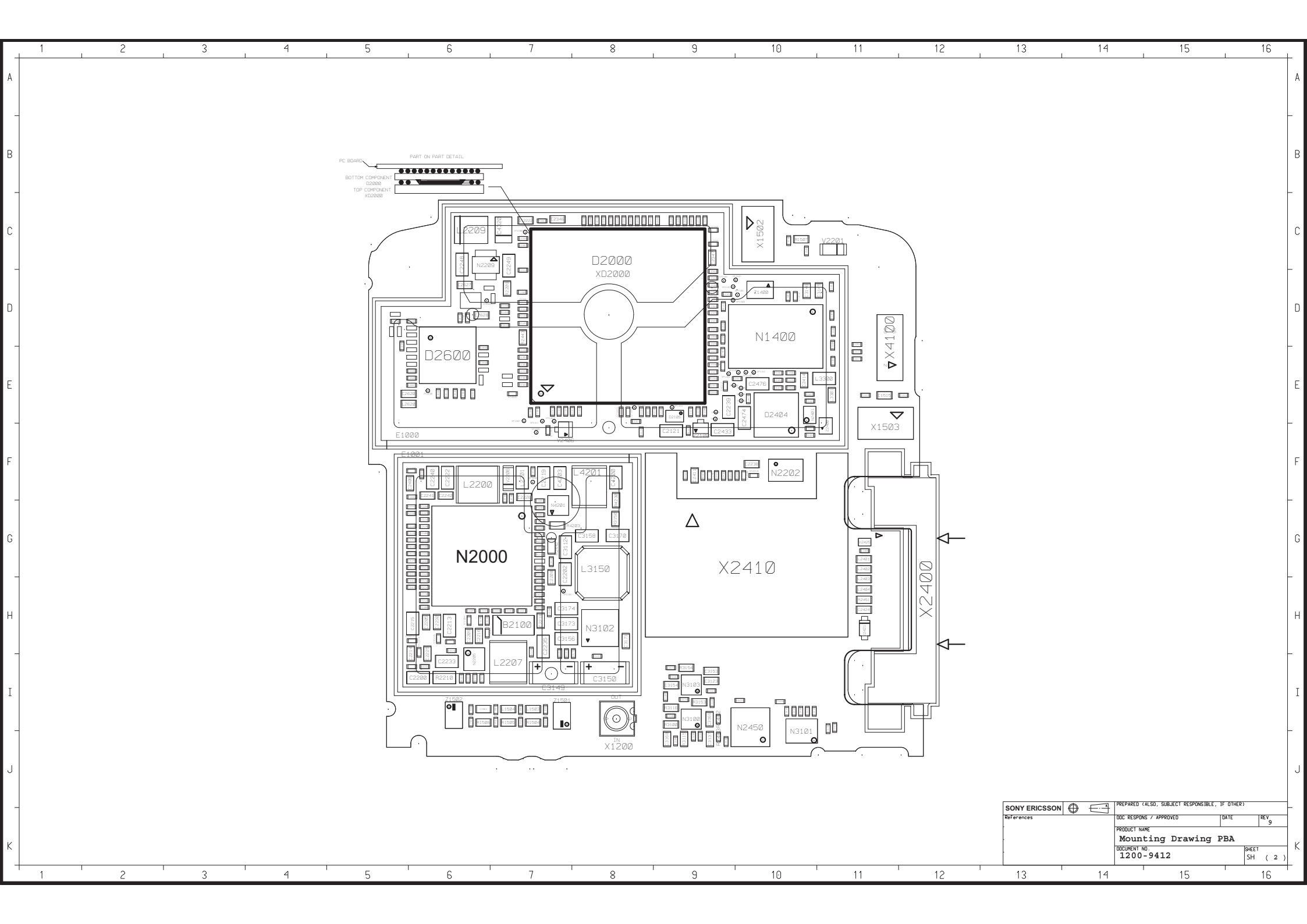


# **Schematics, Electrical**

Applicable for W760

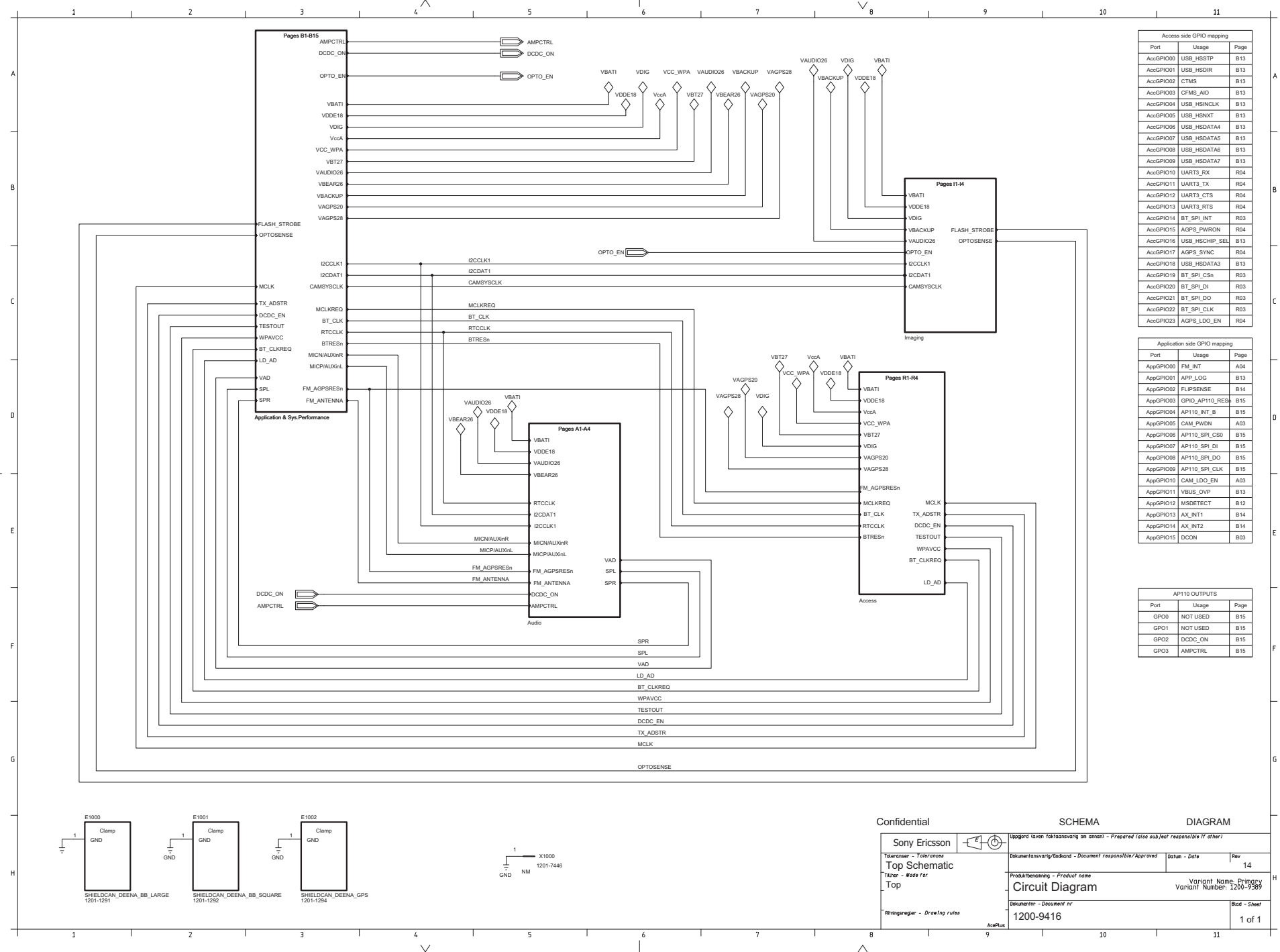


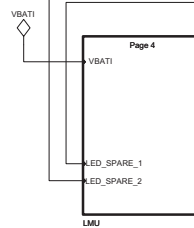
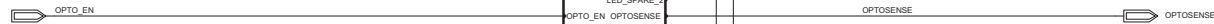
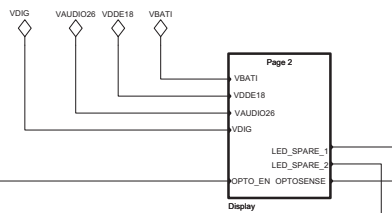
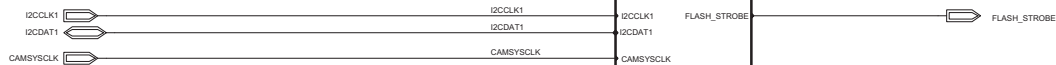
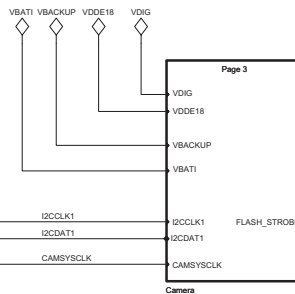
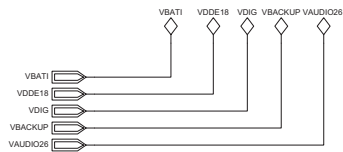
SONY ERICSSON				PREPARED (ALSO, SUBJECT RESPONSIBLE, IF OTHER)		
References				DOC. RESPONSE / APPROVED	DATE	REV 9
				PRODUCT NAME		
				Mounting Drawing PBA		
				DOCUMENT NO. 1200-9412		
						SHEET SH ( 1 )



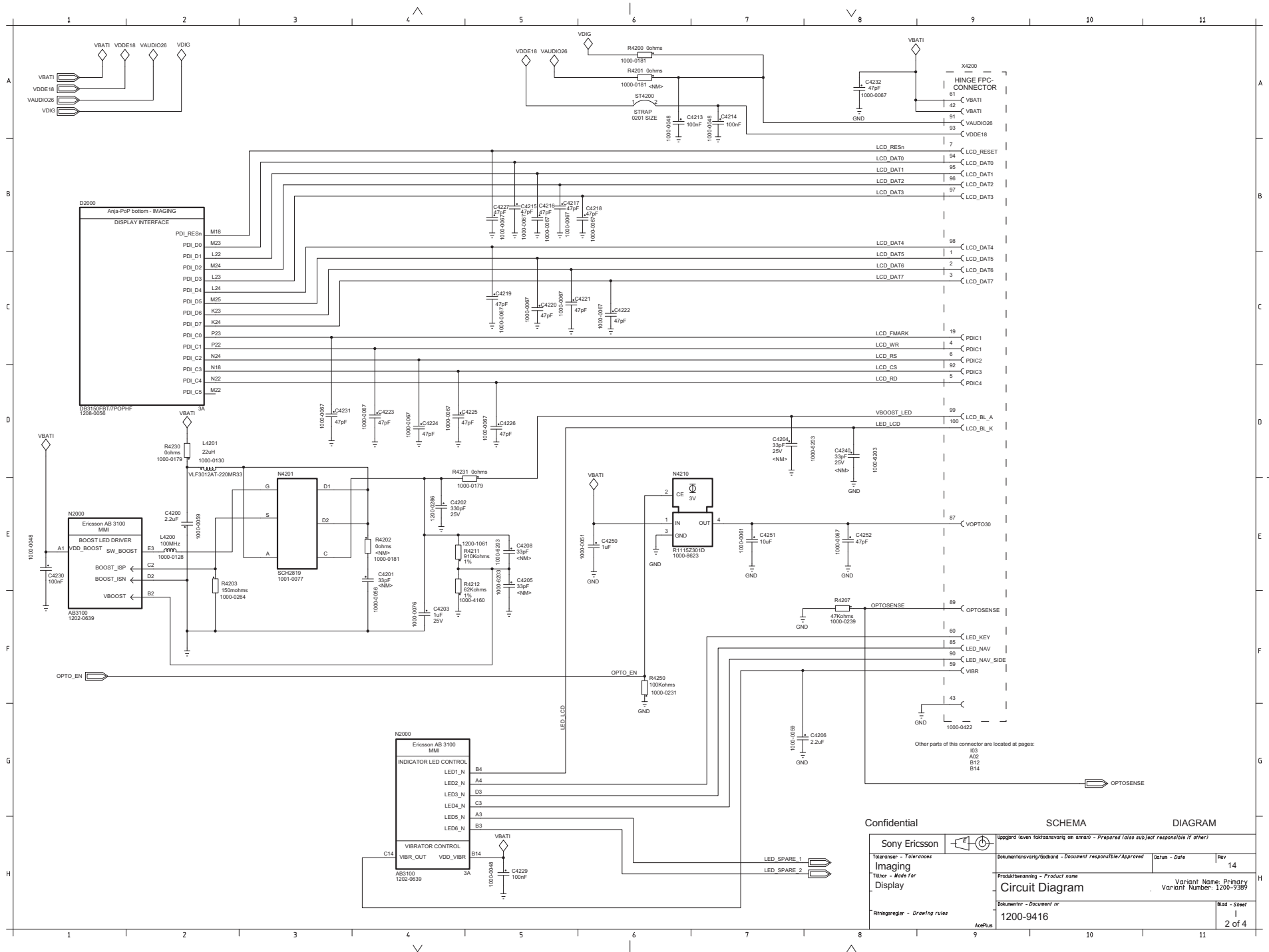
References	SONY ERICSSON				PREPARED (ALSO, SUBJECT RESPONSIBLE, IF OTHER)			
					DOC. RESPONSE / APPROVED		DATE	REV
					PRODUCT NAME			
					DOCUMENT NO.		SHEET	

Mounting Drawing PBA  
1200-9412  
SH ( 2 )





Confidential		SCHEMA		DIAGRAM	
Sony Ericsson		Upplagd (sen faktiskt ansvarig om annat) - Prepared (also subject responsible if other)			
Tolerances		Documents ansvarig/Used and - Document responsible/Approved		Datum - Date	
Imaging		Produktbenämning - Product name		Rev	
Tru - Make for		Circuit Diagram		14	
Imaging		Variant Name: Primary			
Top		Variant Number: 1200-9389			
Ritningsregler - Drawing rules		Documentnr - Document nr		Blad - Sheet	
		1200-9416		1 of 4	

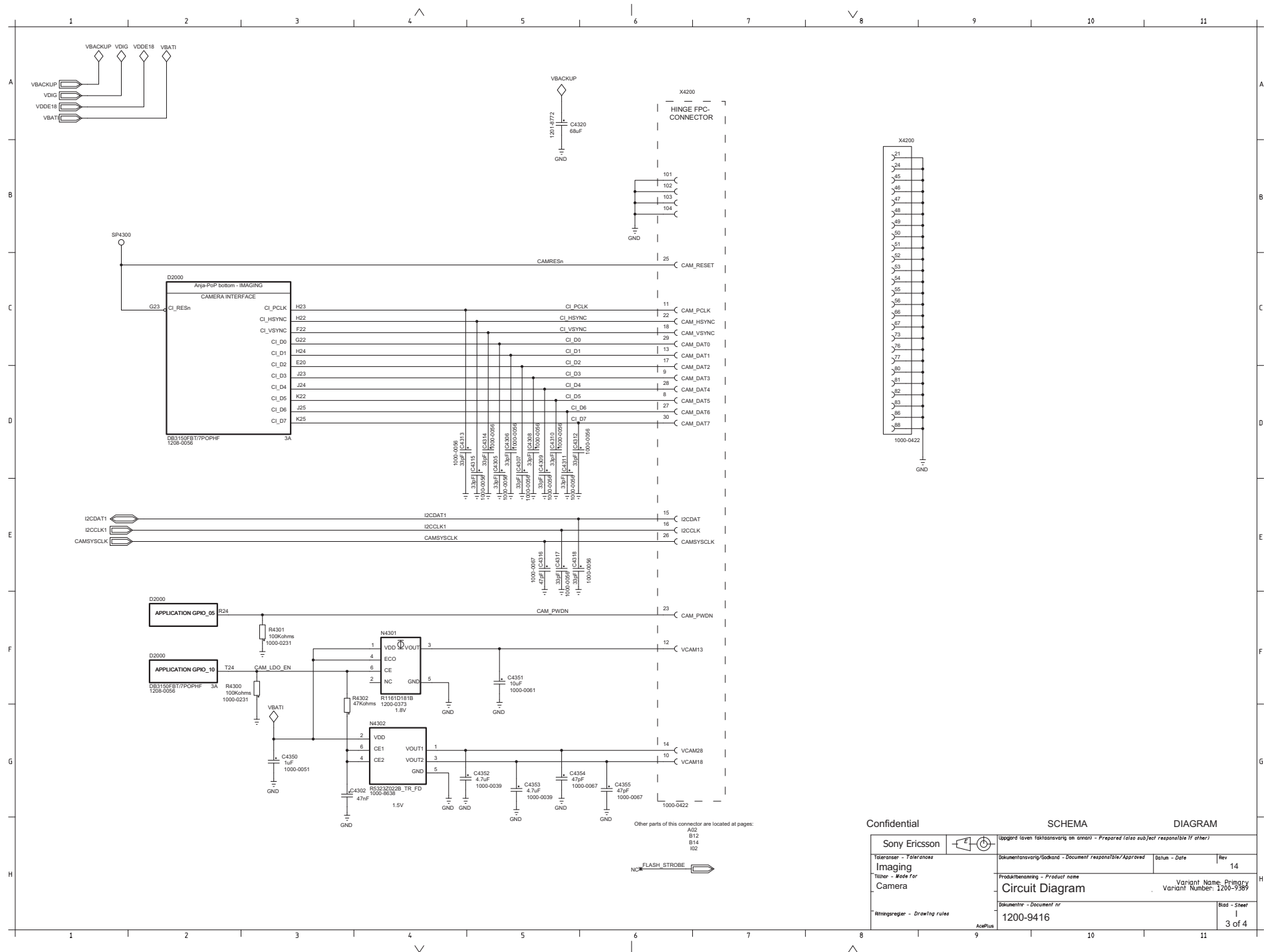


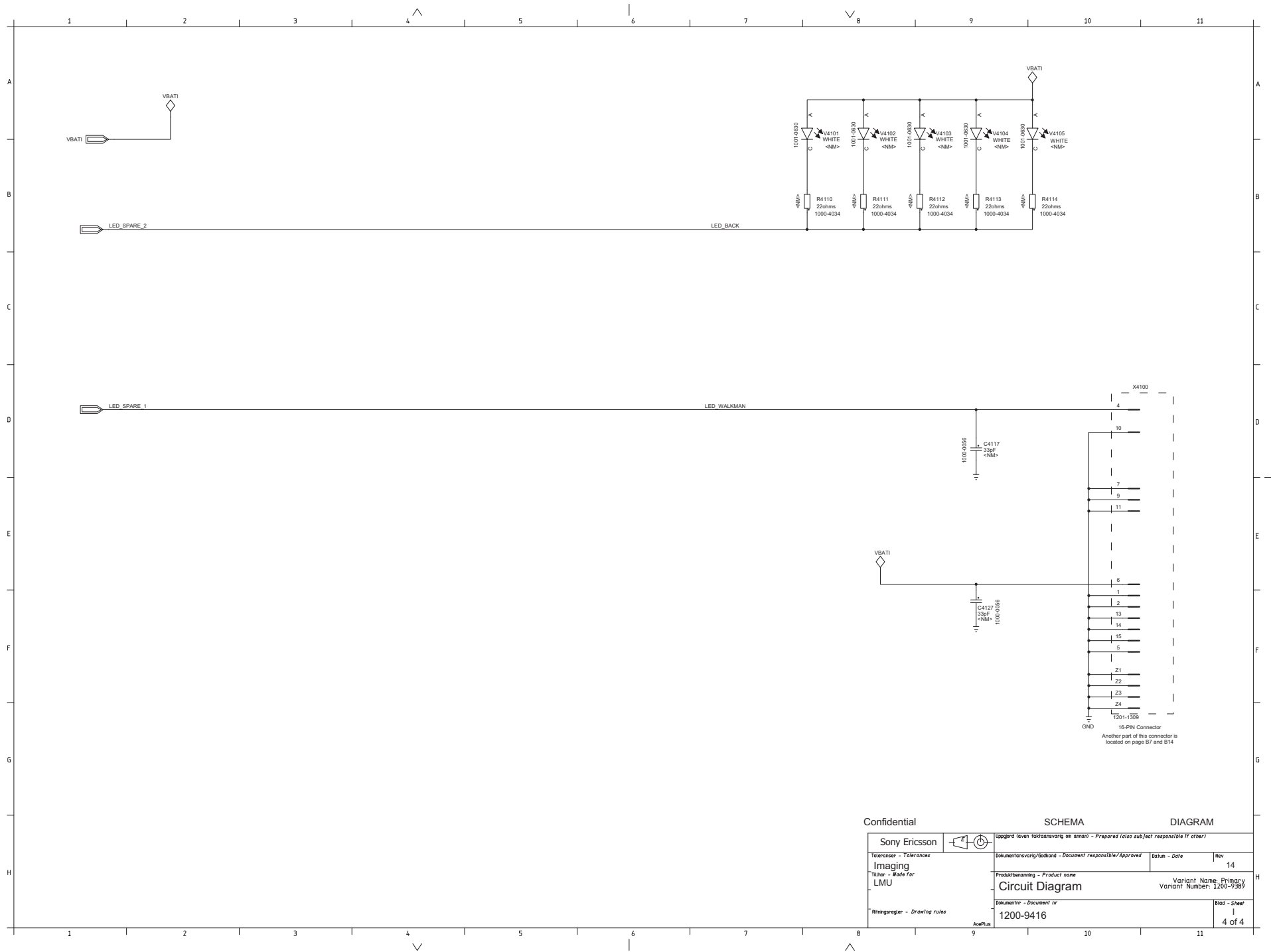
Confidential

SCHEMA

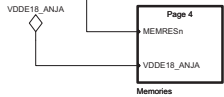
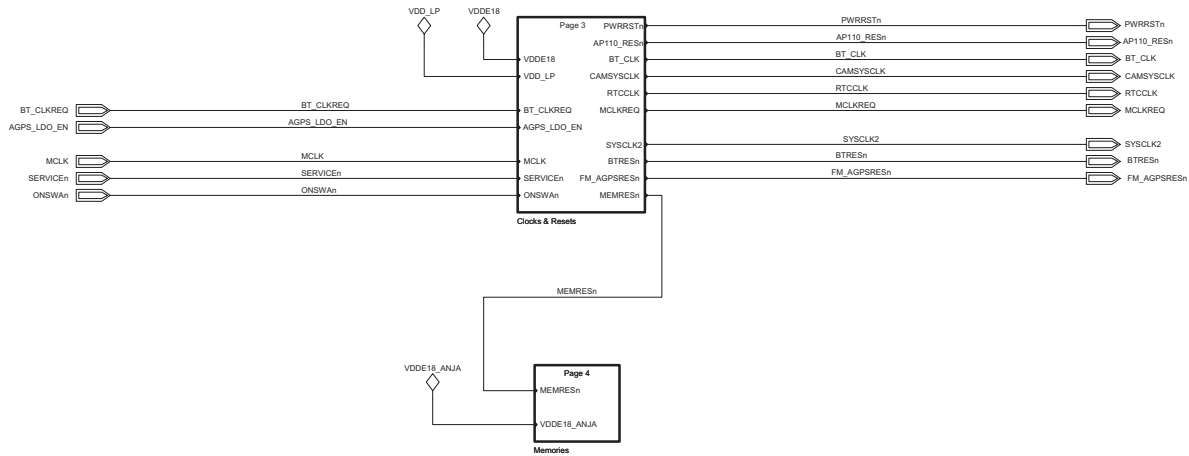
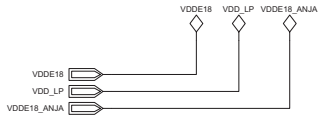
DIAGRAM

Sony Ericsson		Uppgeräven teknisk ansvarig ansvaret - Prepared (also subject responsible if other)	
Teamer - Tolerances	Dokumentationsansvarig/Godkänd - Document responsible/Approved	Datum - Date	Rev
Imaging			14
Titer - Note for	Produktbenämning - Product name	Variant Name: Privacy	
Display	Circuit Diagram	Variant Number: 1200-9416	
Ritningsregler - Drawing rules	Dokumentnr - Document nr	Blad - Sheet	
	1200-9416	1 2 of 4	



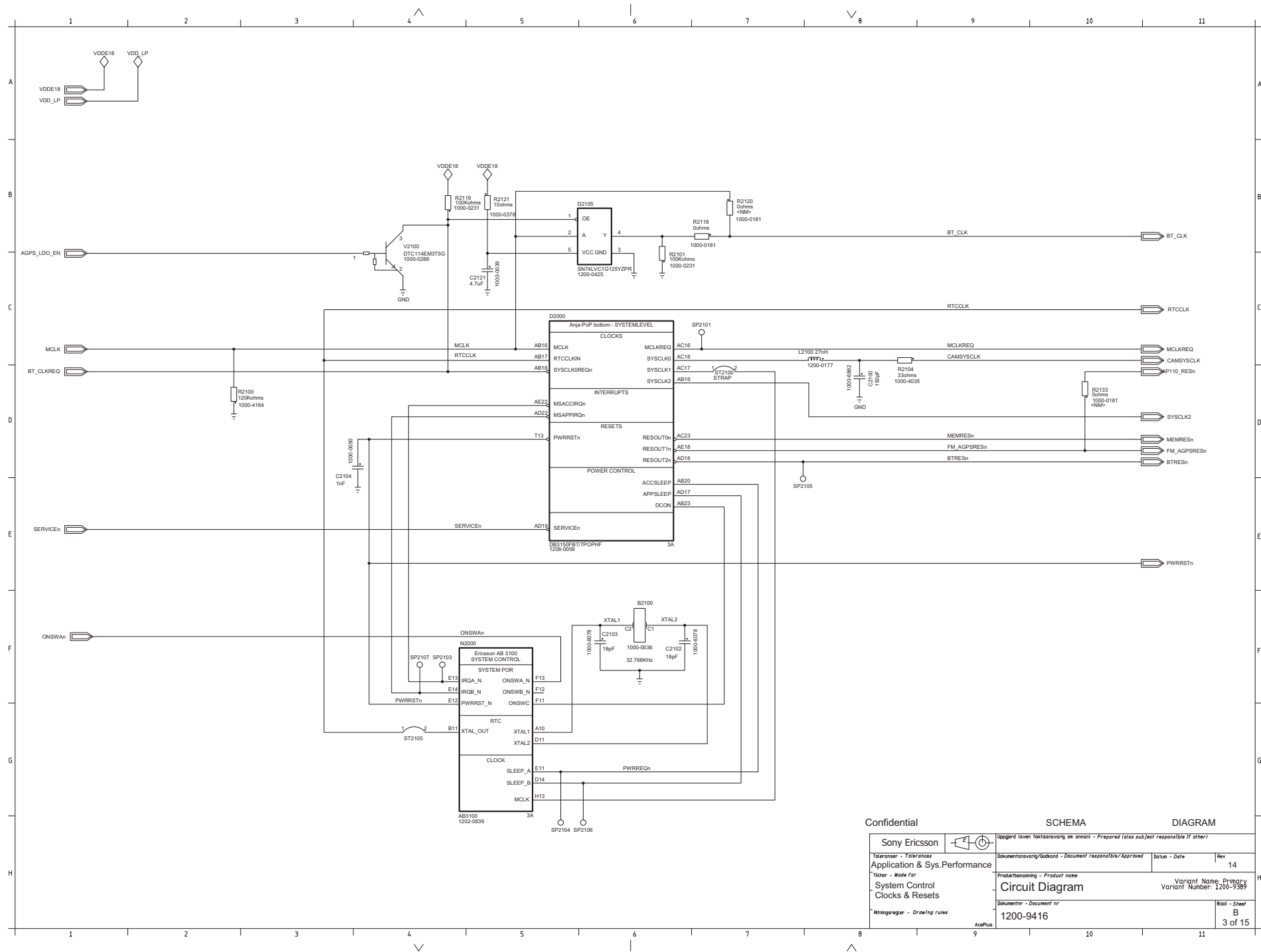






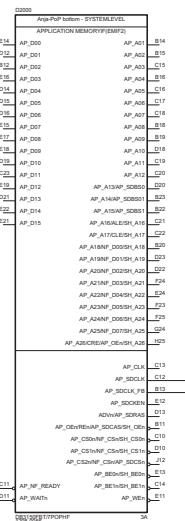
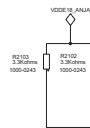
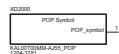
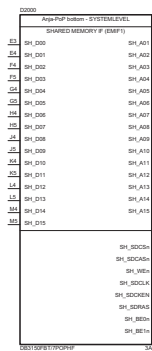
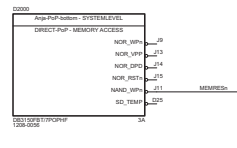
Confidential SCHEMA DIAGRAM

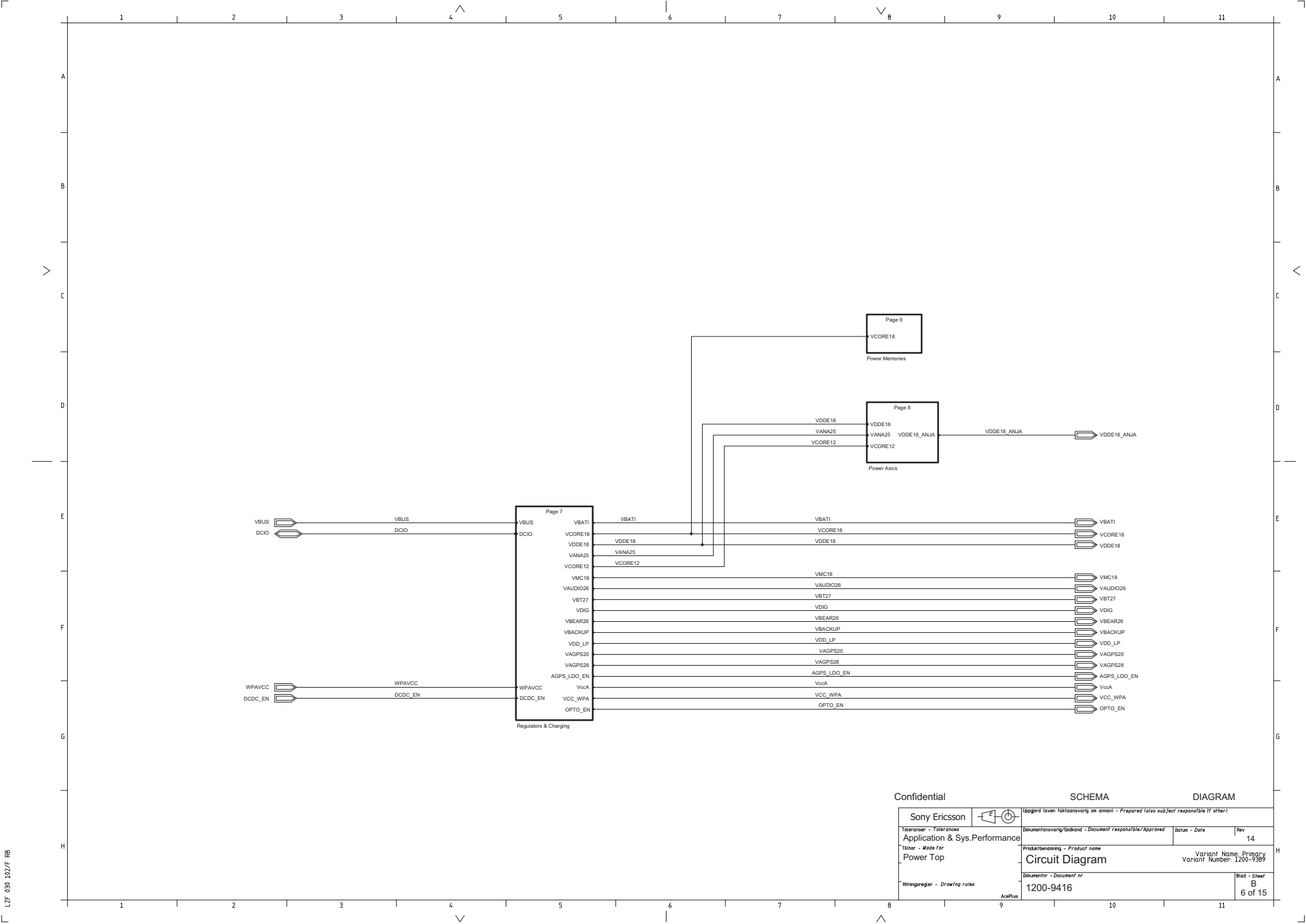
Sony Ericsson		Uppgörd (sen faktasvaring an anant) - Prepared (also subject responsible if other)	
Toleranser - Tolerances	Documentansvarig/Signatör - Document responsible/Approved	Datum - Date	Rev 14
Application & Sys.Performance	Produktbenämning - Product name		
Tekniker - Made for	Variant Name - Prigsgy		
System Top	Variant Number - 1200-9389		
1200-9416		Blad - Sheet	
1200-9416		B 2 of 15	



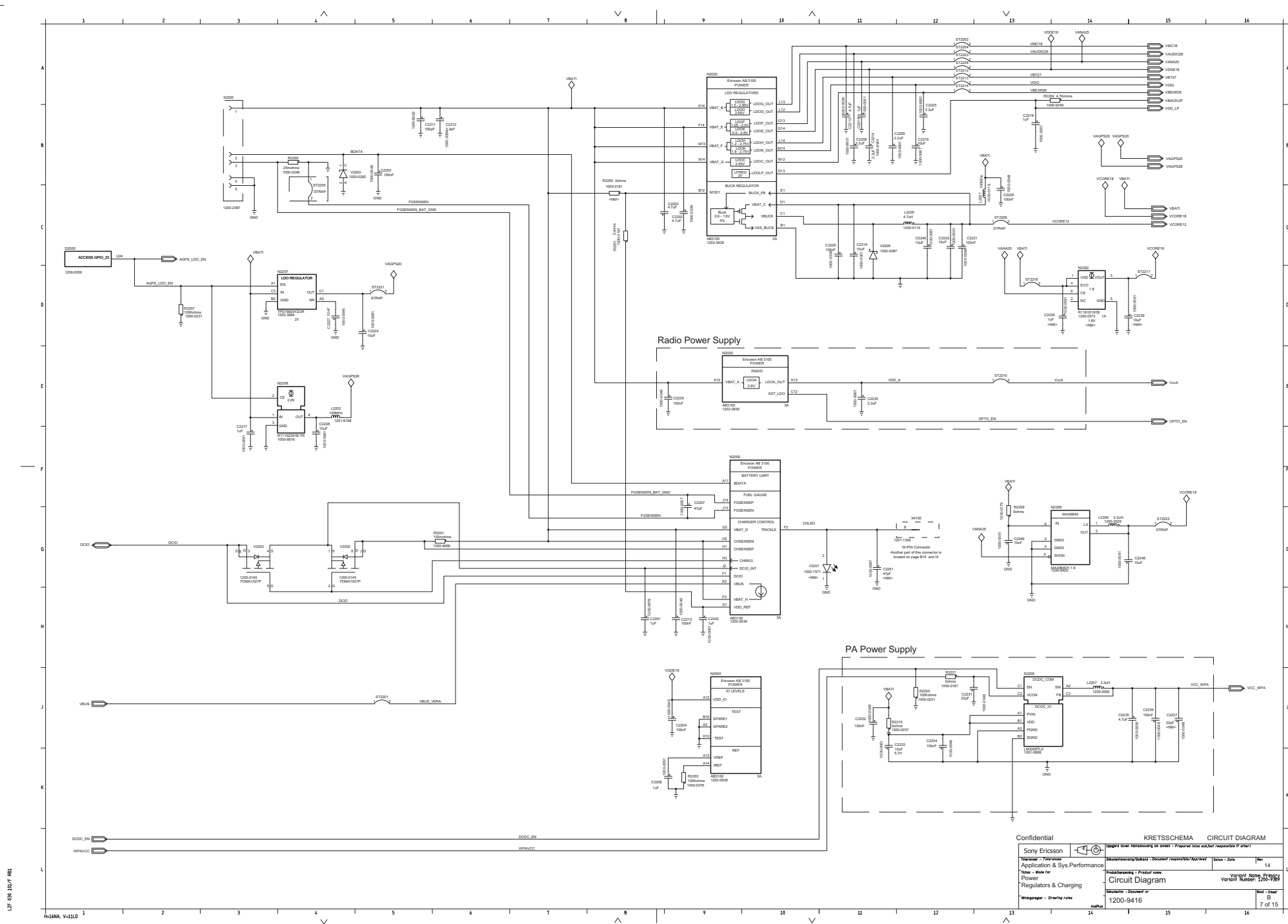


MEMRES

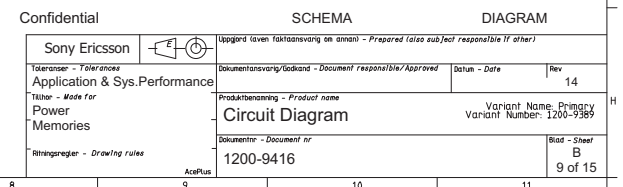


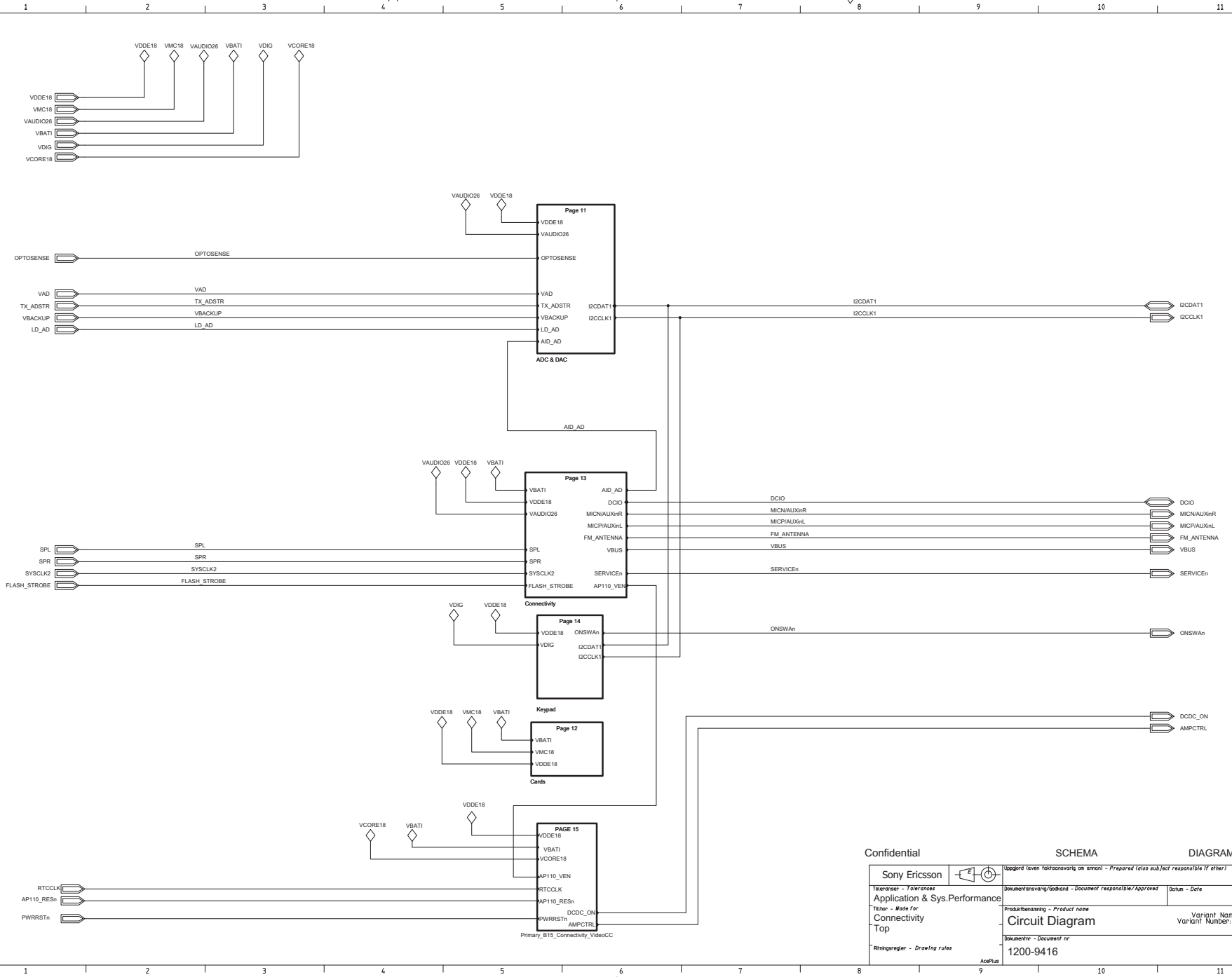


Confidential		SCHEMA		DIAGRAM	
Sony Ericsson		Liggad även faktansvaring an anoni - Prepared (also subject responsible if other)			
Tolerances - Tolerances		Documentansvarig/Issued - Document responsible/Approved		Datum - Date	Rev
Application & Sys.Performance		Produktbenämning - Product name		Variant Name - Priority	
Title - Made for		Circuit Diagram		Variant Number: 1200-9389	
Power Top		Documentnr - Document nr		Blad - Sheet	
Ritningsregler - Drawing rules		1200-9416		B 6 of 15	
Scale/Foot		9		10	
				11	







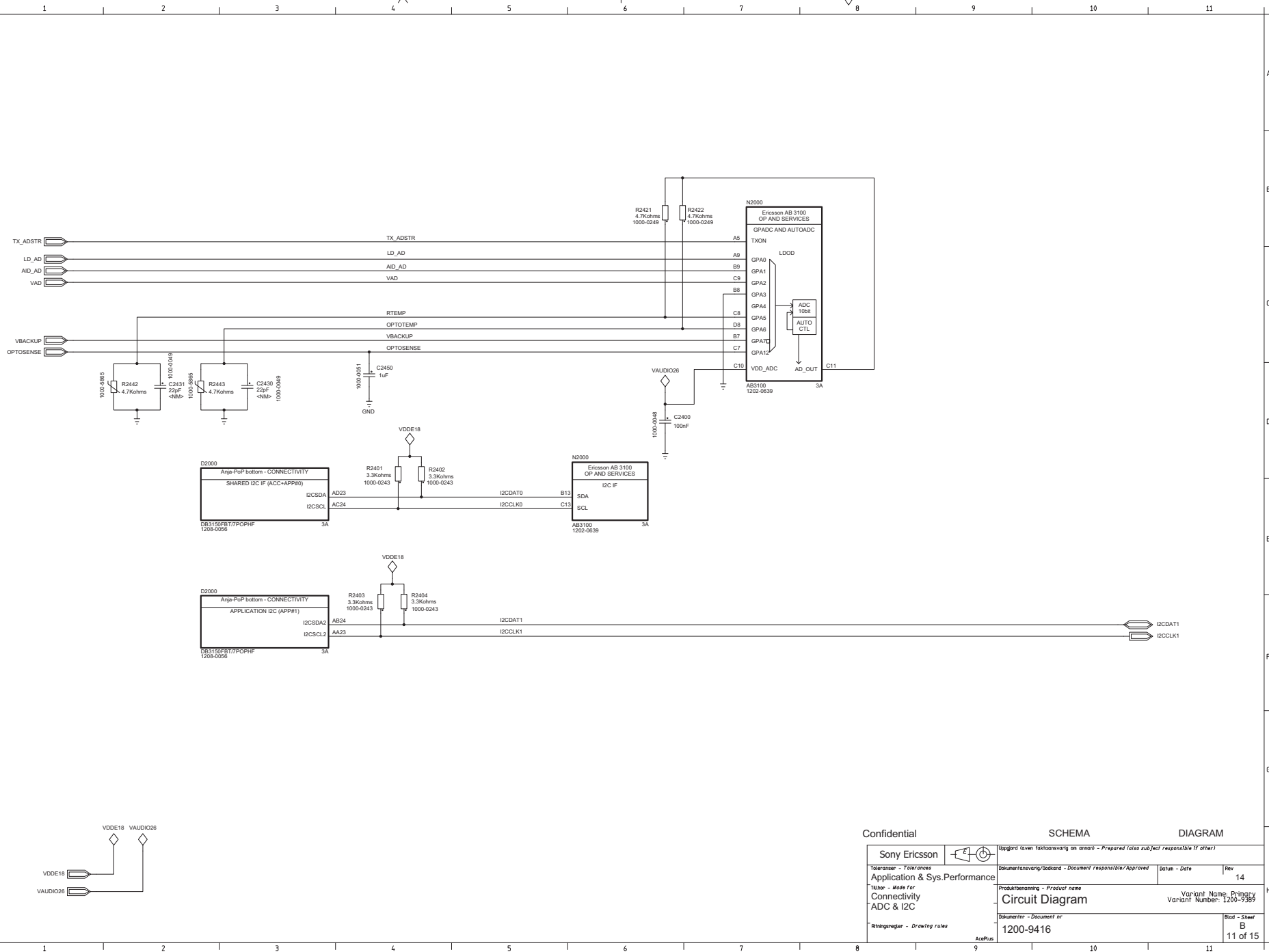


Confidential

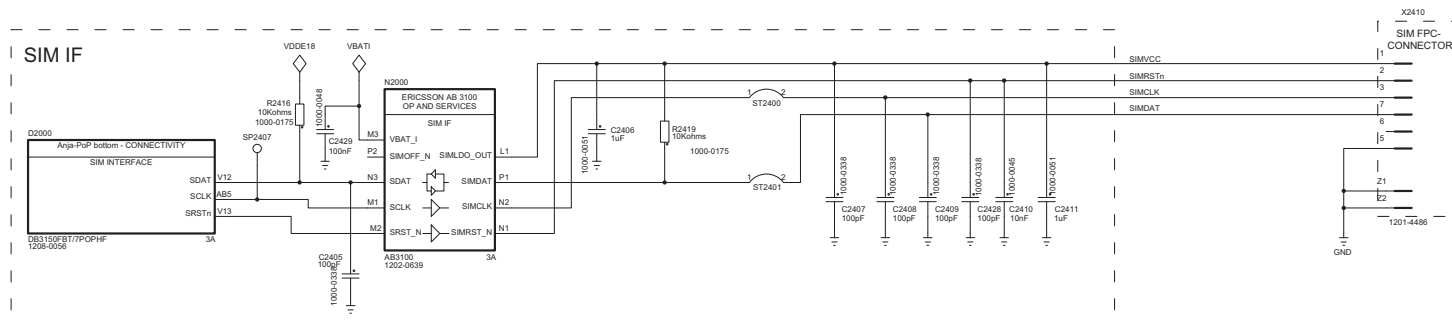
SCHEMA

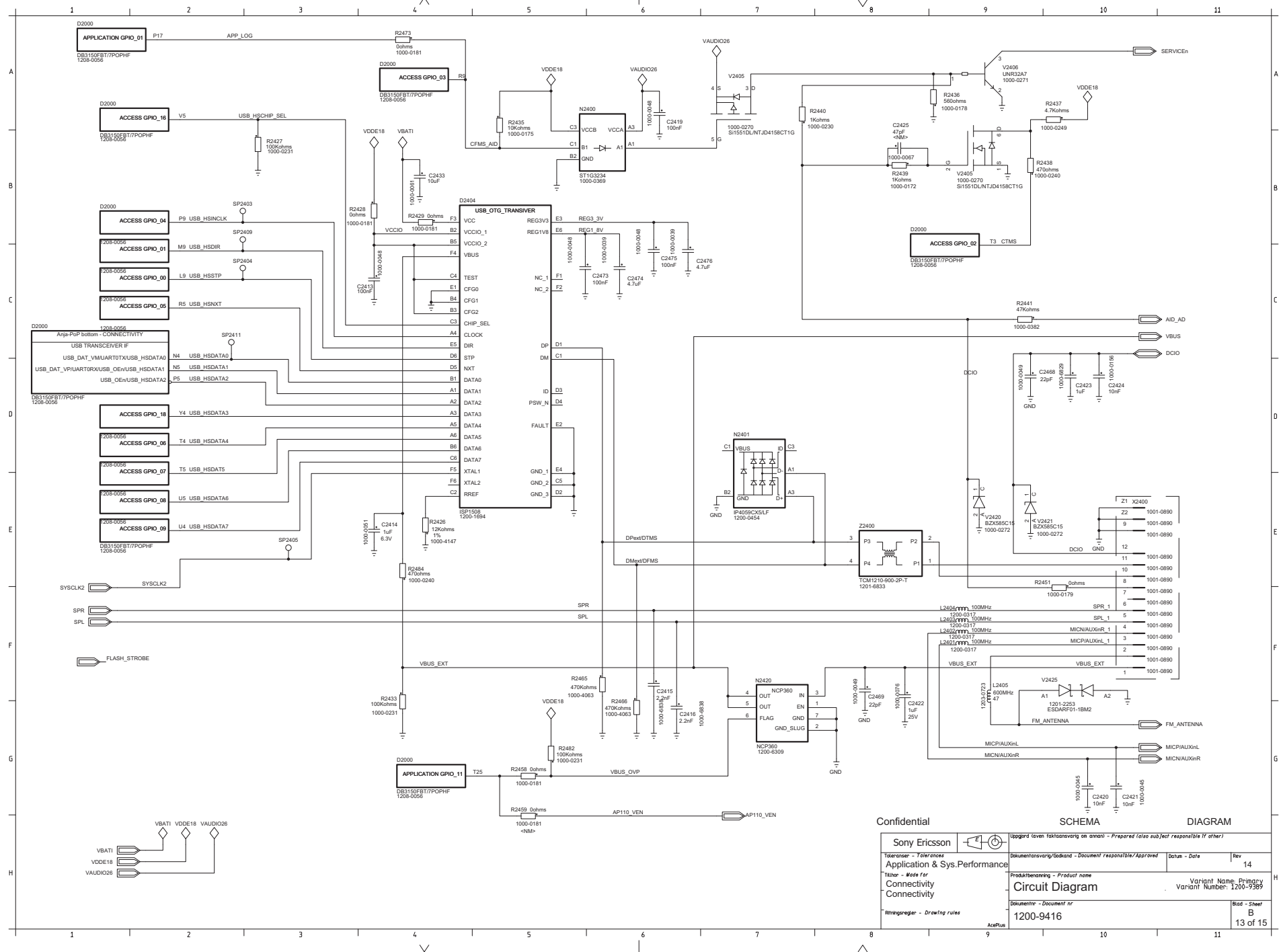
DIAGRAM

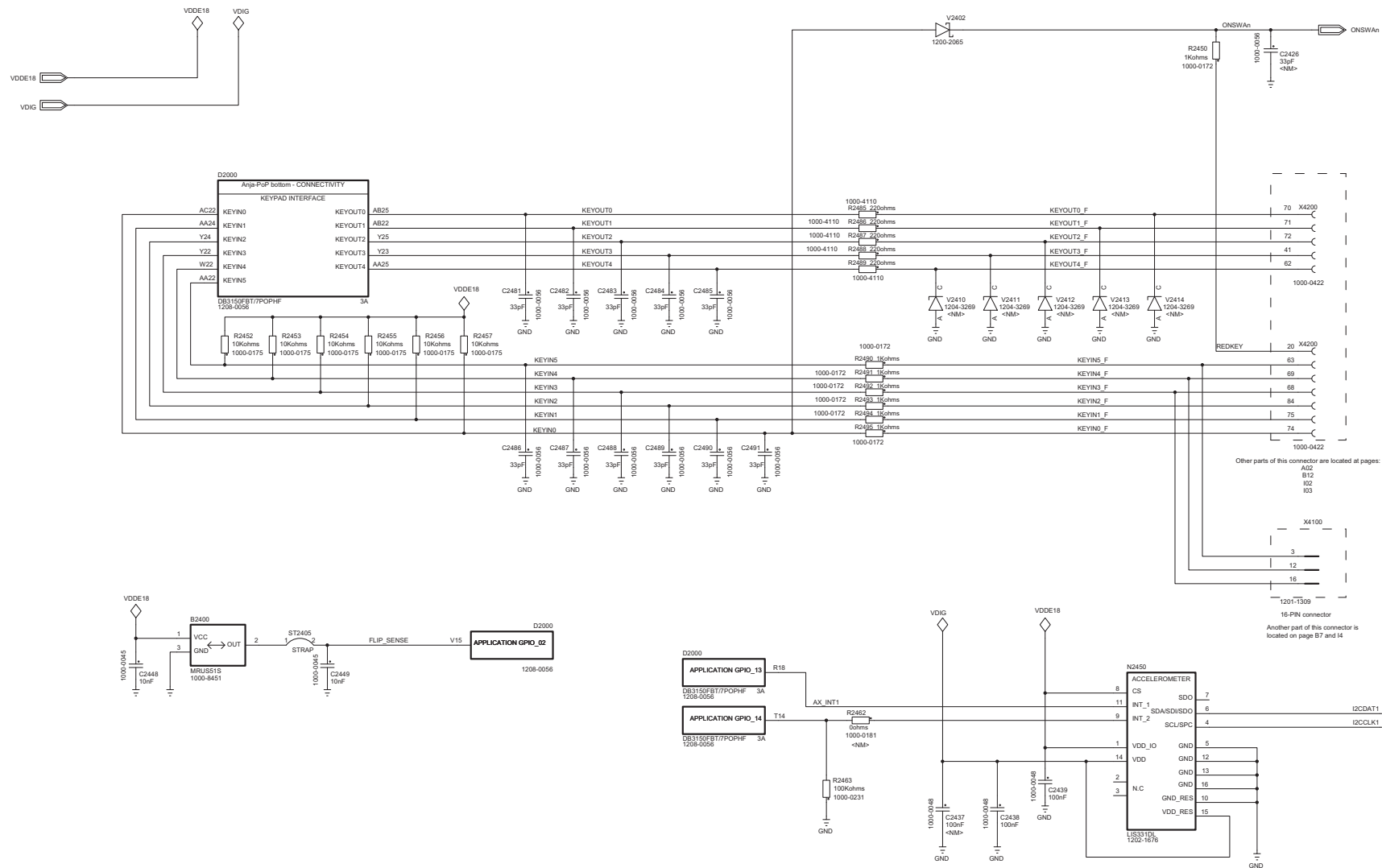
Sony Ericsson		Upplagd (even faktasavering an annan) - Prepared (also subject responsible if other)	
Toleranser - Tolerances		Dokumentansvarig/Godkänd - Document responsible/Approved	
Application & Sys.Performance		Datum - Date	
Titel - Made for		Rev 14	
Connectivity		Produktbenämning - Product name	
Top		Circuit Diagram	
Ritningsregler - Drawing rules		Variant Name- Priority	
1200-9416		Variant Number: 1200-7589	
AcePlus		Blad - Sheet	
		B 10 of 15	



Confidential		SCHEMA		DIAGRAM	
Sony Ericsson		Uppgått läven faktansvaring on anant - Prepared (also subject responsible if other)			
Toleranser - Tolerances		Documentsvarig/lockand - Document responsible/Approved		Datum - Date	
Application & Sys.Performance		Rev		14	
Träner - Made for		Produktbenämning - Product name		Variant Name: Privacy	
Connectivity		Circuit Diagram		Variant Number: 1200-9389	
ADC & I2C		Documentnr - Document nr		Blad - Sheet	
Ritningsregler - Drawing rules		1200-9416		B	
AcetFlus				11 of 15	





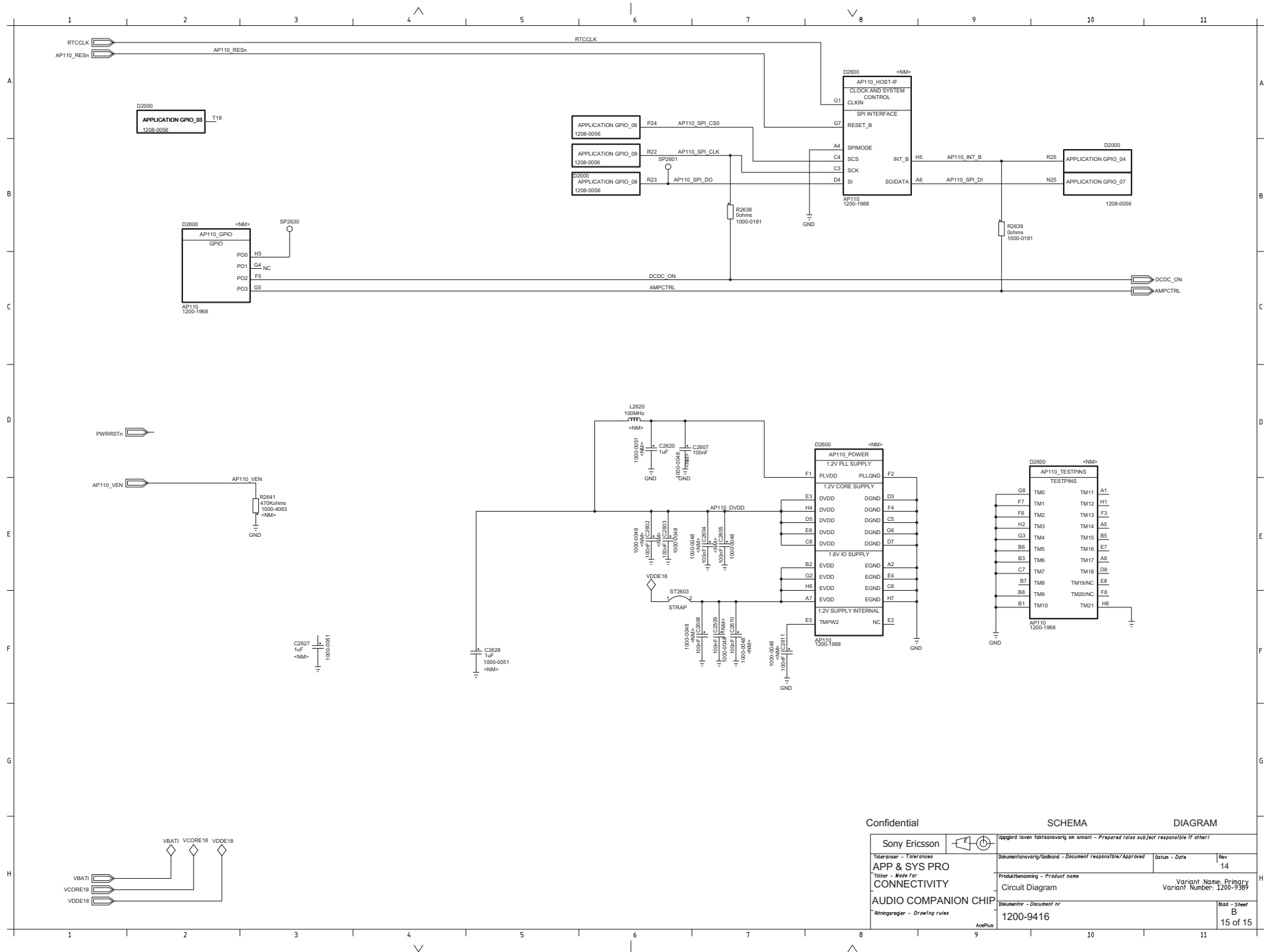


Other parts of this connector are located at pages:  
A02  
B12  
I02  
I03

Another part of this connector is located on page B7 and I4

# Confidential SCHEMA DIAGRAM

Sony Ericsson		Uppgörelse ( även fastställande av anmån ) - Prepared ( also subject responsible if other )	
Tillämpnings - Tolerances		Dokumentansvarig/ Godkänd - Document responsible/ Approved	
Application & Sys. Performance		Datum - Date	
Tillämpnings - Made for		Rev	
Connectivity		14	
Keypad		Productbenämning - Product name	
Ritningsregler - Drawing rules		Circuit Diagram	
		Variant Name - Pregegrupp	
		Variant Number - 1200-1389	
		Dokumentnr - Document nr	
		1200-9416	
		Blad - Sheet	
		B	
		14 of 15	

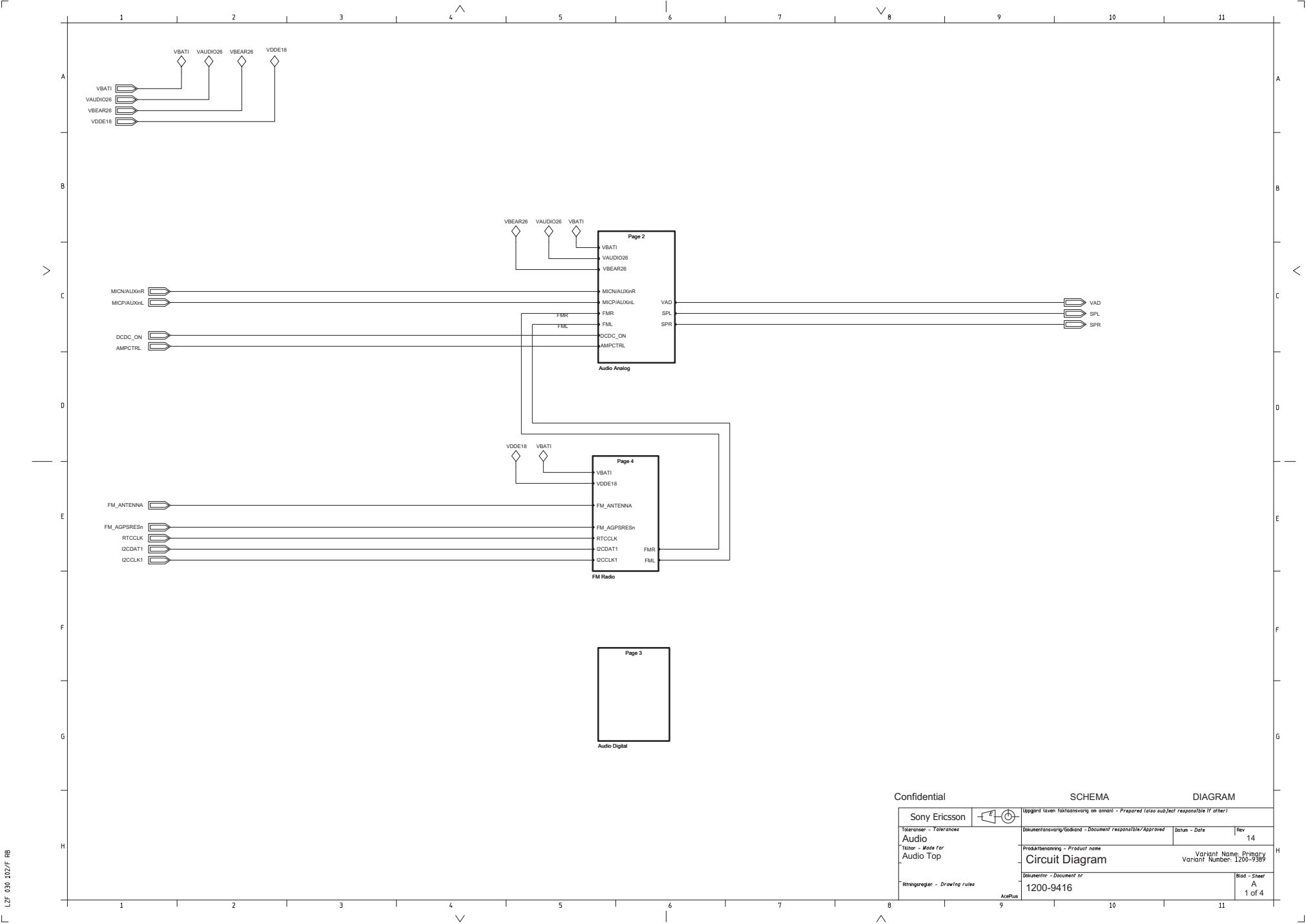


Confidential

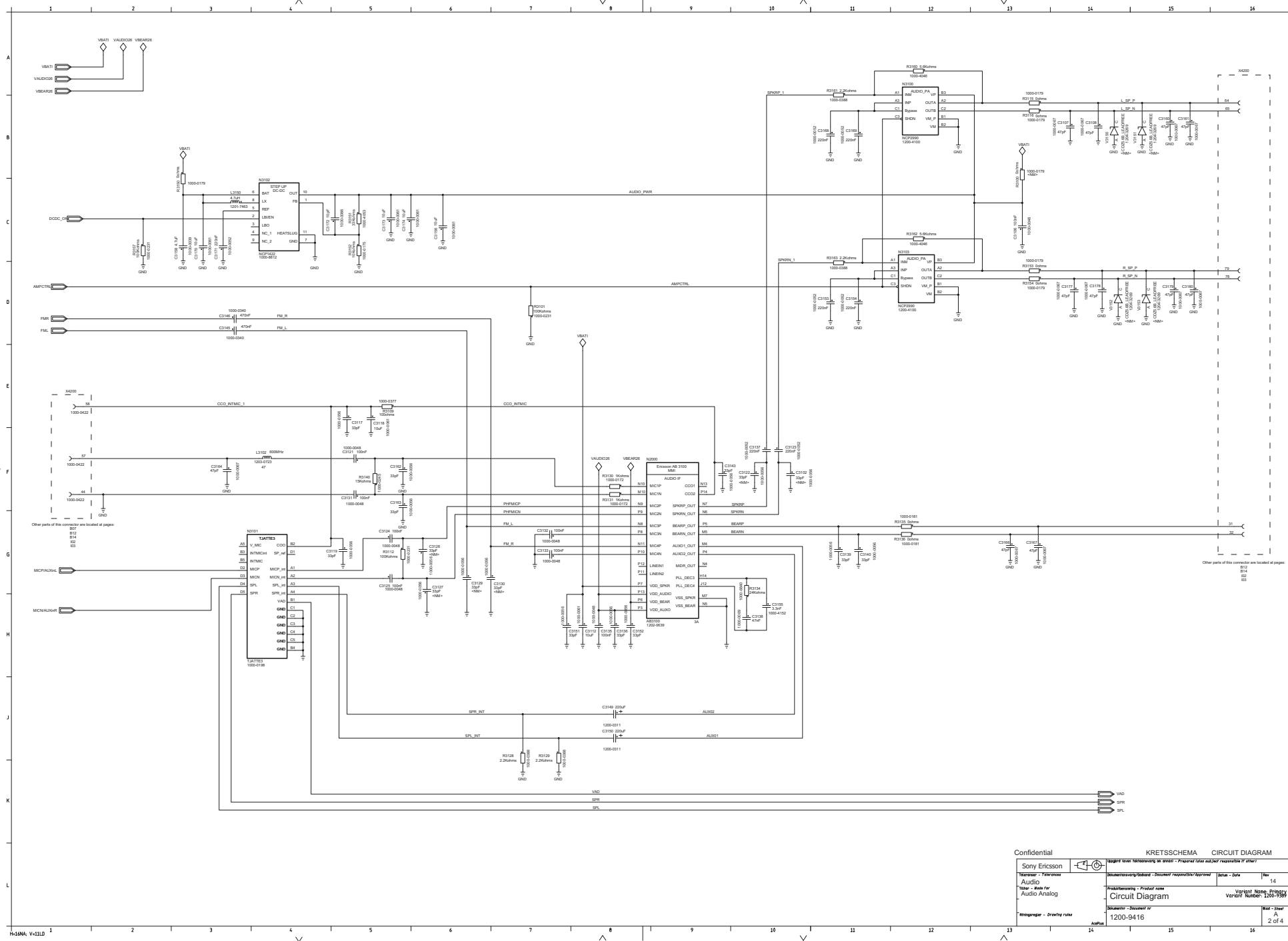
SCHEMA

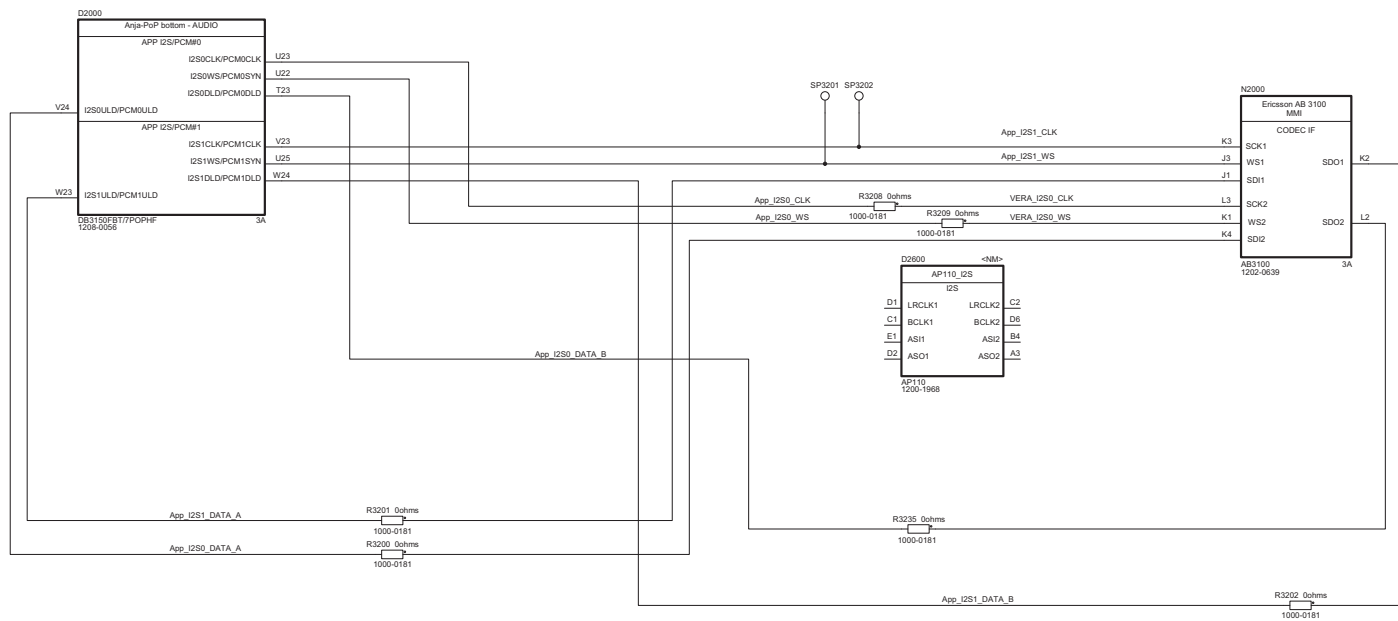
DIAGRAM

Sony Ericsson		Uppgräddaven faktasvarning an annan - Prepared (also subject responsible if other)	
Telenor - Ytteranvar		Dokumentationsvarning/Godkänd - Document responsible/Approved	
APP & SYS PRO		Datum - Date	
Tutor - Made for		Rev	
CONNECTIVITY		14	
AUDIO COMPANION CHIP		Produktbenämning - Product name	
Rättningregler - Drawing rules		Circuit Diagram	
AccePlus		Variant Name: Primary	
1200-9416		Variant Number: 1200-9389	
Dokumentnr - Document nr		Blad - Sheet	
B		15 of 15	



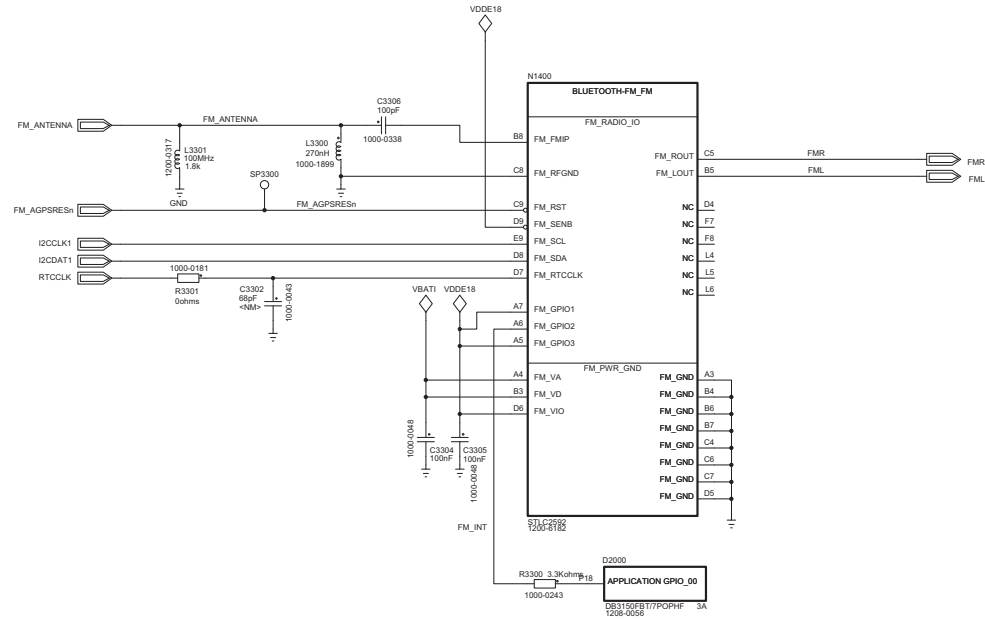
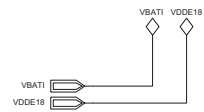
Confidential		SCHEMA		DIAGRAM	
Sony Ericsson		Liggard även faktansvaring an annan - Prepared (also subject responsible if other)			
Tolerances - Tolerances		Documentansvarig/Issued - Document responsible/Approved		Datum - Date	Rev 14
Audio		Produktbenämning - Product name		Variant Name - Priority	
Audio Top		Circuit Diagram		Variant Number: 1200-9389	
Ritningsregler - Drawing rules		Documentnr - Document nr		Blad - Sheet	
		1200-9416		A	
				1 of 4	






Confidential SCHEMA DIAGRAM

Sony Ericsson		Appgräven faktasvarning an annan - Prepared (also subject responsible if other)	
Toleranser - Tolerances		Dokumentansvarig/Godkänd - Document responsible/Approved	Datum - Date
Audio			Rev 14
Färdig - Made for		Produktbenämning - Product name	Variant Name: Privacy
Audio Digital		Circuit Diagram	Variant Number: 1200-9389
Ämningsregler - Drawing rules		Dokumentnr - Document nr	Blad - Sheet
		1200-9416	A
			3 of 4



Confidential		SCHEMA		DIAGRAM	
Sony Ericsson		Uppgjord (även faktakontroll av annan) - Prepared (also subject responsible if other)			
		Dokumentansvarig/Godkänd - Document responsible/Approved		Datum - Date	Rev 14
Toleranser - Tolerances Audio		Produktbenämning - Product name		Variant Name: Primary	
Tuner - Made for FM Radio		Circuit Diagram		Variant Number: 1200-9389	
Ritningsregler - Drawing rules		Dokumentnr - Document nr 1200-9416		Blad - Sheet A 4 of 4	
AcePlus					

1 2 3 4 5 6 7 8 9 10 11

A

B

C

D

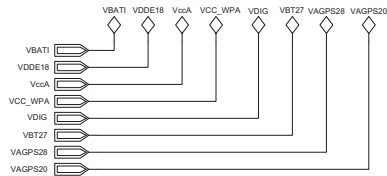
E

F

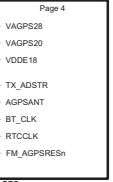
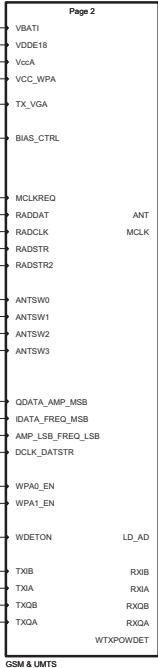
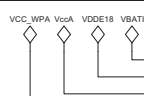
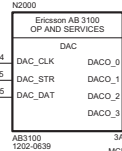
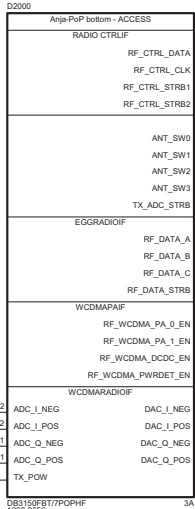
G

H

1 2 3 4 5 6 7 8 9 10 11

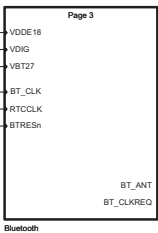


MCLKREQ



FM\_AGPSRESn

BT\_CLK  
RTTCLK  
BTRESn



Bluetooth

Confidential

SCHEMA

DIAGRAM

Sony Ericsson

Toleranser - Tolerances

Access

Titel - Title for

Access

Top

Ämningsregler - Drawing rules

Uppgärd (även faktasvaring om annan) - Prepared (also subject responsible if other)

Dokumentationsvarig/Godkänd - Document responsible/Approved

Datum - Date

Rev

14

Produktbenämning - Product name

Circuit Diagram

Variant Name: Primary

Variant Number: 1200-9389

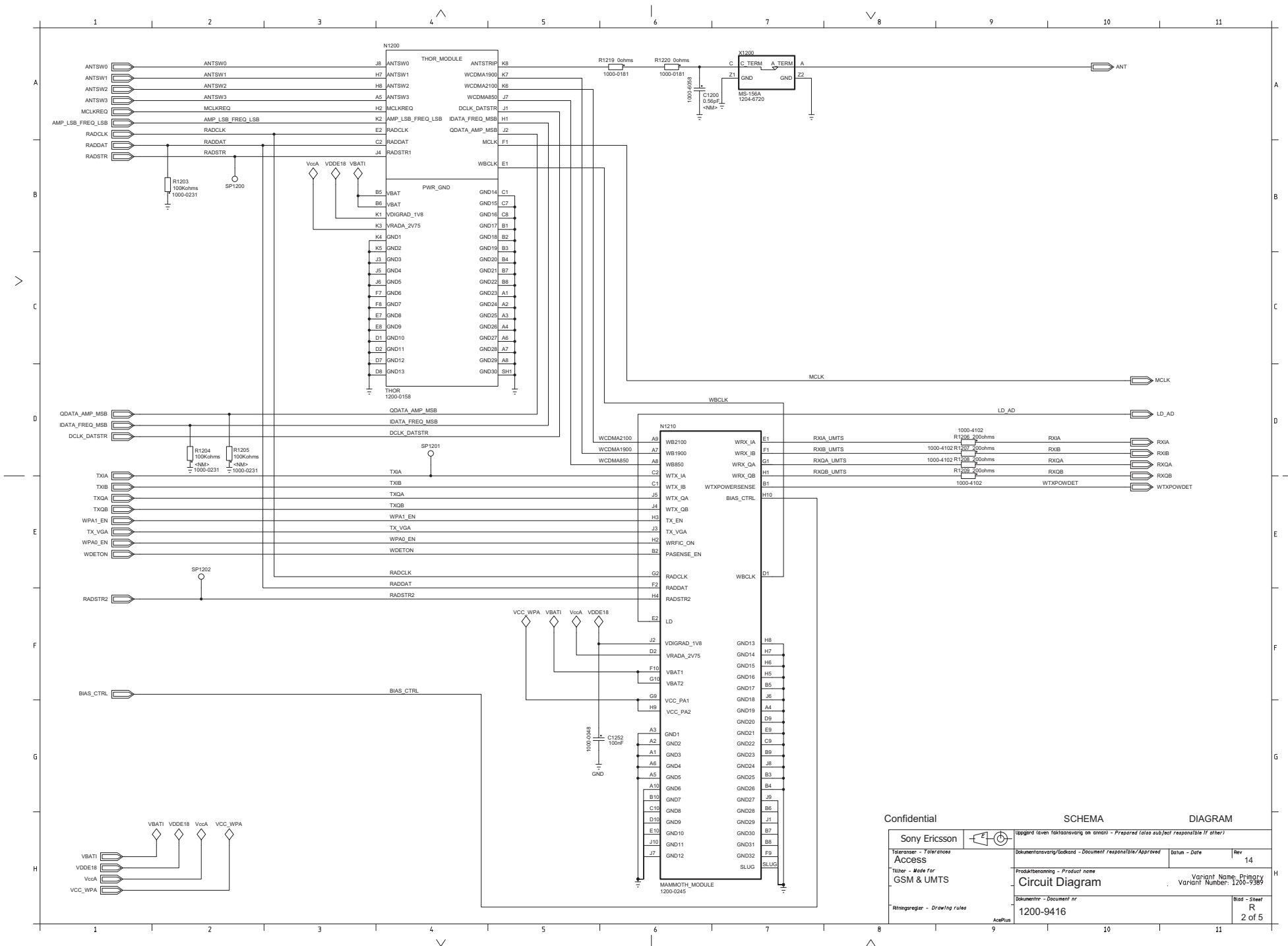
Dokumentnr - Document nr

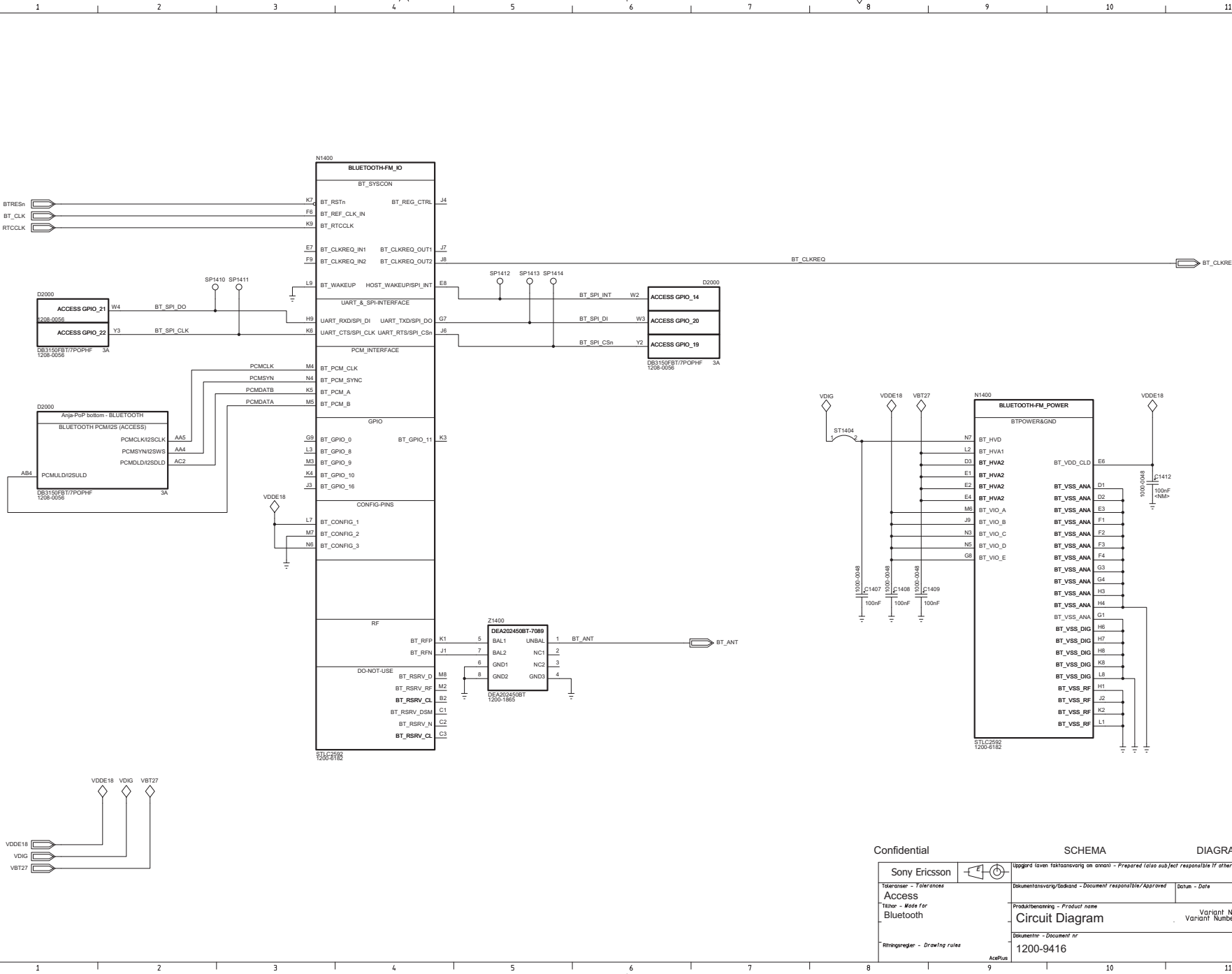
1200-9416

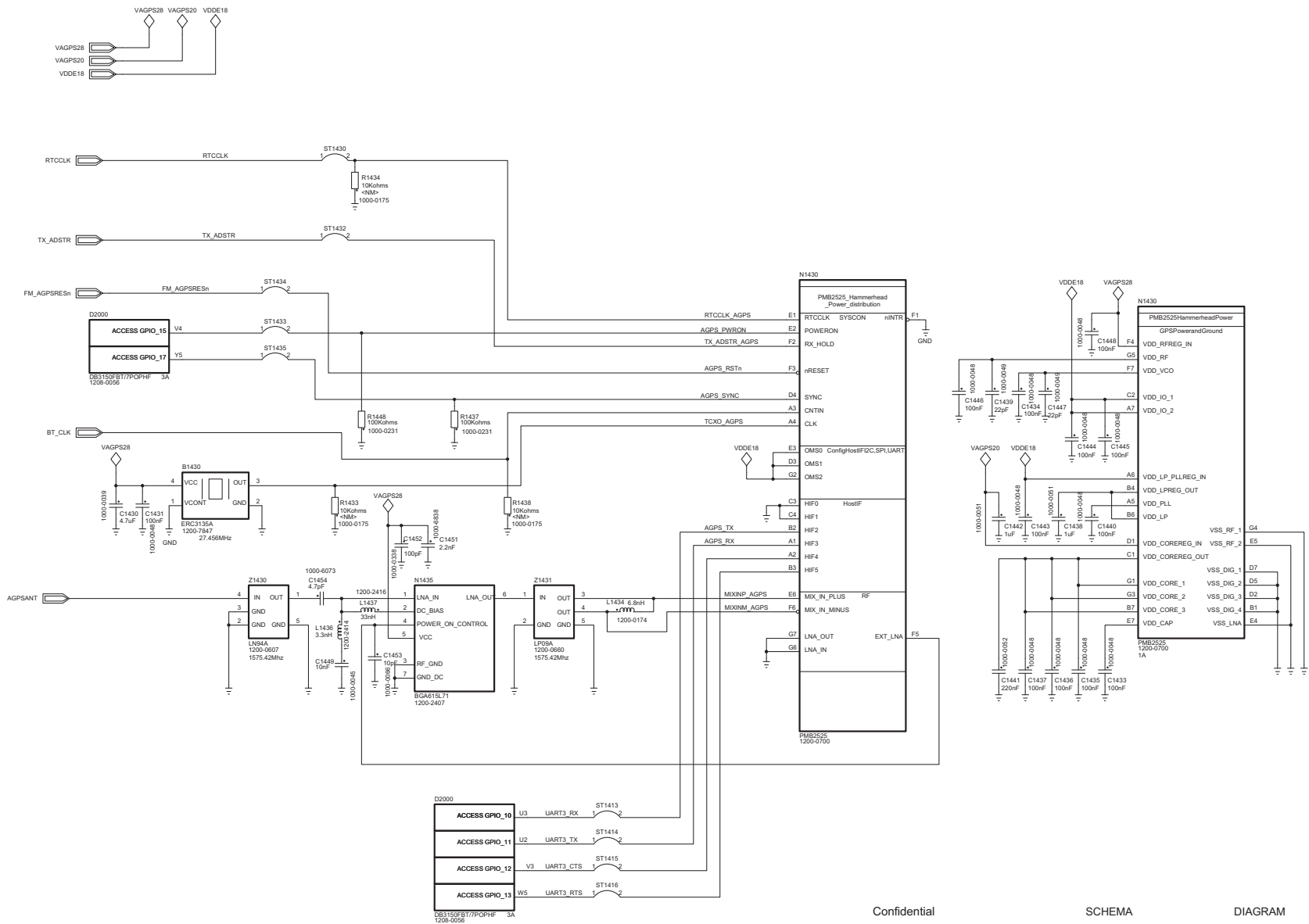
Blad - Sheet

R

1 of 5





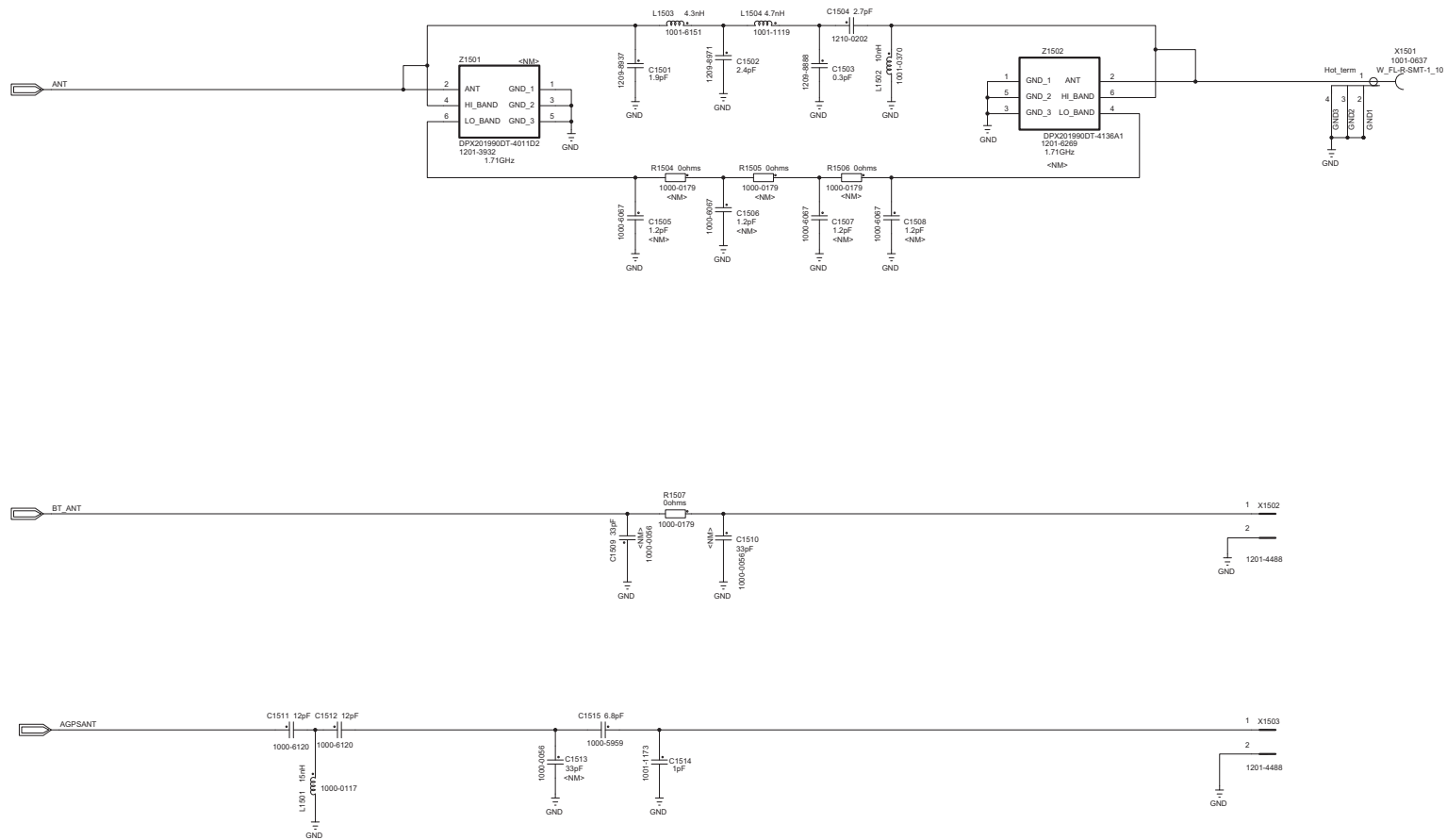


Confidential

SCHEMA

DIAGRAM

Sony Ericsson		Uppgär (even fastslävaring on annan) - Prepared (also subject responsible if other)	
Tolerans - Tolerances	Access	Dokumentationsansvarig/Godkänd - Document responsible/Approved	Datum - Date
Tillför - Made for	AGPS	Produktbenämning - Product name	Rev 14
Ritningsregler - Drawing rules		Circuit Diagram	Variant Name: Primary
		Dokumentnr - Document nr	Variant Number: 1200-7589
		1200-9416	Blad - Sheet
			R 4 of 5



Confidential

SCHEMA

DIAGRAM

<p>Sony Ericsson</p> <p>Tolerances - Tolerances</p> <p>Access</p> <p>Title - Make for</p> <p>ANTENNA</p> <p>Bitningsregler - Drawing rules</p>		<p>Uppgord (given faktisnansvning on annan) - Prepared (also subject responsible if other)</p>		
		<p>Dokumentansvarig/Utvecklad - Document responsible/Approved</p>	<p>Datum - Date</p>	<p>Rev</p> <p>14</p>
		<p>Produktbenämning - Product name</p> <p>Circuit Diagram</p>	<p>Variant Name: Primary</p> <p>Variant Number: 1200-9389</p>	
		<p>Dokumentnr - Document nr</p> <p>1200-9416</p>	<p>Blad - Sheet</p> <p>R</p> <p>5 of 5</p>	

AcqPlus

## Revision History

Rev.	Date	Changes / Comments
1	2009-12-15	1 <sup>st</sup> release